

## 2022 Santa Suits Available for SALE

### Front of the Suit

**BRAND NEW EO – Sale Price \$750.00 Cdn**

Traditional Santa suit Size 42-48" Jacket and up to 52" waist



This Santa suit is a rich dark red velvet. Partially lined and trimmed with white faux rabbit fur. The suit has a zipper front and has white fur on both sides of the zipper enabling Santa to wear the jacket open and still be 'in character'. Velvet elastic waist pants with pockets, matching Santa hat, naugahyde belt, boot tops and gloves.



**Back of the Suit -Brand New EO**



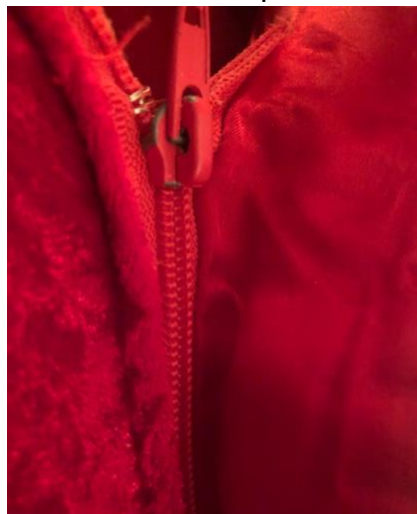
**USED Suit Below ↓  
– Sale Price \$350.00**

The suit (Zipper front) below is a good multiple purpose suit for either corporate events, back up or pet photo days. Includes Belt & Pants only. Fur can be replaced.

↓ **Used Suit Below \$350**



↓ **Used Suit Below \$350**



**Brand new Plus Size Plush Santa Suit \$350.00 BH – Available for pick up or delivery from Calgary, AB**



Includes the entire suit.

Weight up to 300 lbs, Height 5'9-6'2, Chest 33"-42", Waist 42"-46" Inseam 32"-34"

**Custom made suits below are the same fabric and quality.**

*Hire a Santa.ca*

**WOW !!!!!**  
 'What a BEAUTIFUL suit !  
 The fabric is top of the line. The workmanship is AMAZING and the little extras such as the pocket inside the jacket, the cuffs and so on as great. I especially like to pocket inside the jacket. It can come in VERY handy at times. The fur is so nice and there is so much of it. I can't wait for the parade. Frederictonians are going to be excited for sure. Had you not tried to contact my dear friend Winston we would not have connected and I would not have this beautiful new suit. Life is interesting for sure. If you need a reference for your product...tell them to contact me.  
 A very pleased customer.

Santa Norm

PS: I will send you a picture once the Christmas season gets underway.  
 People will be falling all over themselves wanting pictures with Santa this year HA! HA!

visit [hireasanta.ca/santa-gear](http://hireasanta.ca/santa-gear)

**Santa Suit Gently used PM** – Excellent quality custom made suit. – Available for pick up or delivery from Edmonton, AB – Minimum bid starts at \$1000.00 **Size is 4XL**

**Details**

Height:	6'3
Weight:	380
[A]Arm/Sleeve Length	28
[B]Neck Diameter	20
[C]Chest/Under Arm	56
[D]Waist at Belly Button	61
[E]Inseam Length	28
[F]Around Body	67
[G]Collar Height from Floor	68
[H]Hat Diameter	24



**Santa Suit Gently used EG** – Excellent quality custom made suit. – Available for pick up or delivery from BC – Minimum bid starts at \$750.00 **2XL Size**

#### Details

Height:	73
Weight:	240
[A]Arm/Sleeve Length	28
[B]Neck Diameter	18
[C]Chest/Under Arm	49
[D]Waist at Belly Button	42
[E]Inseam Length	32
[F]Around Body	60
[G]Collar Height from Floor	63
[H]Hat Diameter	24
Special	

**Santa Quality Boots – Plain Black – Blundstones Size 10ish**  
**Very good condition. On sale for \$90.00**

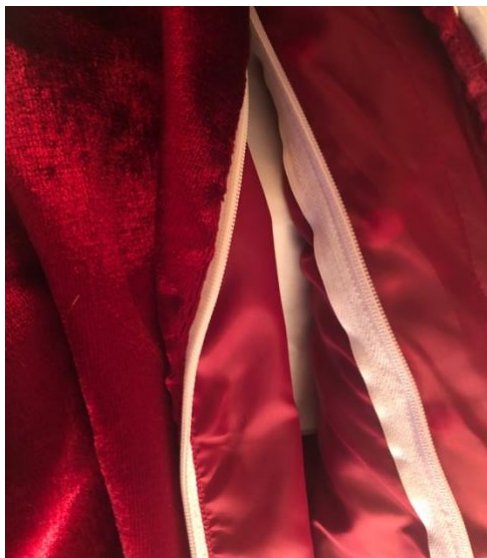




**Brand New - Custom Made Suit – Sale Price is \$850.00 (3 photos below)**

This suit fits an XL (approximate). Only worn at our Santa School.

Has snaps for removable fur. No red runs during dry cleaning. Has zipper. Includes Hat & Pants.



**Used Suit Below ↓ – Sale Price is \$450.00 – Size 2XL**

This suit below is very worn toward the back part of the sleeve around the elbows. You can use it as a back up, pet photo days or just salvage the fur and re-use it on another suit.



Used Suspenders – Sale Price is \$20.00



Vynl Belt slightly used – Sale Price is \$55.00



**Brand New never used Sale Price is \$75.00**

100% Synthetic Santa Wig only



**Foam Wig Head Stand**

\$10.00



Wig purchased at the store. Brand new never used.

**Sale Price is \$35.00**



**Sale Price is \$35.00**



- 80% Polyester
- Hook & Eye closure
- 🧑 One Size Fits for Most Adult Men
- 🧑 Eco-Friendly Fabric, soft, slightly elastic and comfortable to wear. Internal filler is sponge.
- 🧑 Light weight, about 300g. Put it on, which will not increase the burden on the body, and give your Santa a "bowl full of jelly" look
- 🧑 Easy to wear: Hang neck design with an Velcro on the back. An elastic strap to fit around your waist, give you a perfect Santa Claus Stomach



Santa Chair – Easy to use and foldable and on wheels – **Sale Price \$1500.00**

- Dimensions: 16.6" deep, 64" tall, 48" wide

It will pay off within a year. Clients willing to pay and have charged them \$250 per event!

6 Instruction kits have been prepared for rental purpose with the tools included if required.





## Seat Set-Up Instructions



**Step 1** Lay the folded unit on a soft surface with the decorative carving facing down. You should be able to see the edge of the red kick panel facing you. If the side rails are attached unscrew them and remove.



**Step 2** Lift the front edge of the top two panels (top one is the black seat and the second one the red front kick panel) up. Swing the bottom of the red kick panel towards you and up.



**Step 3** While holding the kick panel up, lift one of the two side leg panels from the center upward allowing their tabs to fit through the slots in the kick panel. Apply firm pressure against the front edge of the seat panel and the bottom edge of the leg to pressure the seat panel towards you until the leg panel tabs pop through the kick panel slots.



**Step 4** Repeat with the second leg panel. Shove the slide lock bars into the holes in the leg panel tabs that protrude through the kick panel slots. This will lock the kick panel and leg panels in position.



**Step 5** Roll the entire base unit forward onto its legs. The back panels will remain flat on the floor behind the base.



**Step 6** Insert a bolt through the bottom hole of a stripped side rail and through one of the bottom holes of the back panel. Loosely secure with a wing nut. Lift the side rail up allowing it to rotate and slide sideways into the slot at the back corner of the seat. It's a tight fit and you may have to force it the first few times.



**Step 7** Lift the three hinged back panels up and secure them to the vertical side rails with stove bolts and wing nuts, top one first then the center one. Repeat the process with the other side rail. Tighten all the wing nuts when the back is in position. A helper holding one side makes this process easier.

**Step 7** Place the cushion on top of the base unit with the skirt hanging over the front and sides. Your Seat For Santa is ready for use.

Watch a video of the complete process at our web site at:  
[hireasanta.ca/santa-seat-setup-instructions](http://hireasanta.ca/santa-seat-setup-instructions)

